



Courtesy: Lost Coast Outpost

ACTIVITY: Surfing

CASE: [GSAF 2011.09.11.b](#)

DATE: Sunday September 11, 2011

LOCATION: The accident took place in the Pacific Ocean at Power Poles in Samoa Beach (just across the bridge from Eureka), Humboldt County California, USA.

NAME: Benjie Rose

DESCRIPTION: He is a 37-year-old male from Eureka. He is 5'9" tall, 180 lbs and was wearing a black wetsuit and black booties.

SURFBOARD: Black and white trifin board.

BACKGROUND

WEATHER: At 12h08, Eureka recorded partly cloudy skies and 10 mile visibility. The air temperature was 60.8°F, dew point 53.6°F, humidity 77%, sea level pressure 29.96 inches and wind direction was NW at 13.8 mph. By 12h53, the sky was clear. The surfer estimated the air temperature at Samoa Beach to be 70°F.

MOON PHASE: Full, 100% of the Moon was illuminated .

SEA CONDITIONS: The sea surface temperature was 53°F, estimated. The water was calm with 4- to 5-ft surf, underwater visibility was "average for the area."

ENVIRONMENT: Sandy seabed with sand bars. Just inside of the sand bars there is a deeper channel. No marine mammals were seen, there was no unusual fish or bird activity, nobody was fishing, and there were no kelp beds.

DISTANCE FROM SHORE: 40 yards

DEPTH OF WATER: Eight feet, estimated

TIME: 12h20

NARRATIVE: Six surfers were in the water. Benjie had been in the water for about 45 minutes. "I was sitting on my board waiting for a wave when all of a sudden I felt a hard impact on my board directly from below. A couple of guys on a sand dune saw the shark impact me and said it knocked me up in the air. I briefly saw the sharks tail submerge right after the impact. I turned, my board was still in one piece, and began paddling for shore, a wave came quickly and I surfed it on my belly, came to a deep water channel inside of the sand bar and paddled across it, caught another small wave and my board broke into two pieces. Got to the sandy beach as fast as possible."

INJURY: "I was pretty freaked out but only had a bloody nose...I think from when the shark impacted my board...might have hit me in the face...not sure. Otherwise I was completely un-injured."

DAMAGE TO SURFBOARD: My board has a big impact mark and teeth marks. The board (pictured on previous page) broke in two as the surfer was paddling inshore.

SPECIES: White shark?

CASE INVESTIGATOR: Ralph Collier





© Global Shark Accident File, 2011. All rights reserved. This report may not be reproduced or abridged without written permission of the Global Shark Accident File



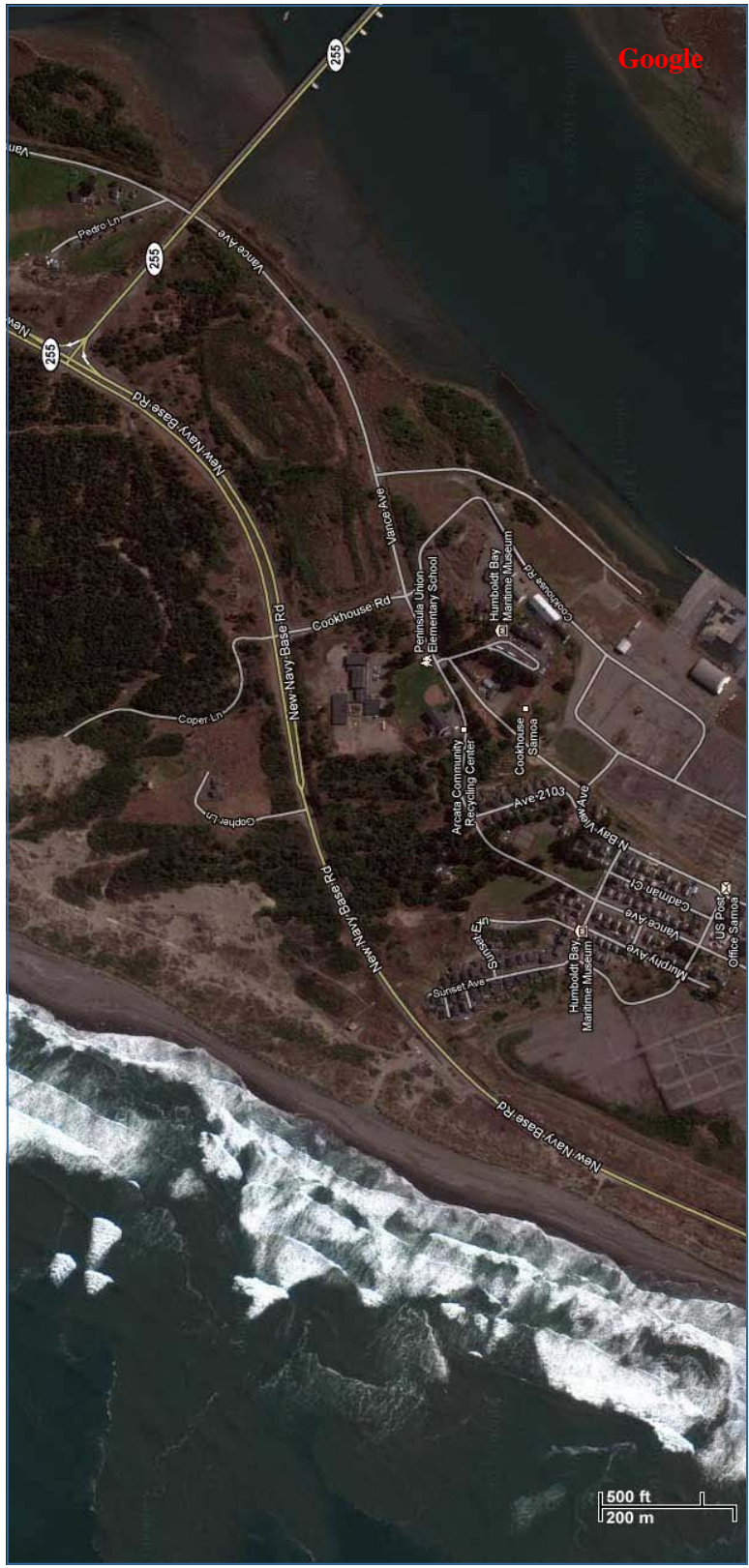




© Global Shark Accident File, 2011. All rights reserved. This report may not be reproduced or abridged without written permission of the Global Shark Accident File

5321





© Global Shark Accident File, 2011. All rights reserved. This report may not be reproduced or abridged without written permission of the Global Shark Accident File